

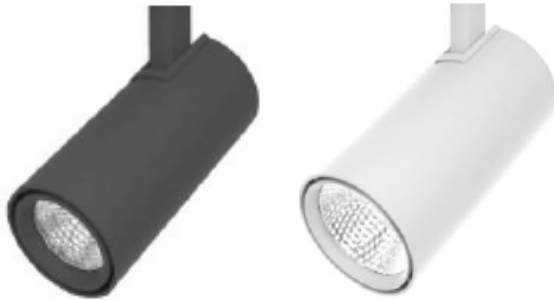
Track Light (24Vdc)

Project:

Location:

Catalog #:

Quantity:



24VDC Power System Compatibility:



Features

Teslyte TR-24 Series track light features 24V DC driverless LED light engine that connects directly to the 24VDC NEXTEK Power Systems while delivering maximum efficiency, photometric and electrical performance. Designed to complement the TR-24 in style and profile, the TR-24 comes with different sizes to satisfy any specific needs and compatible with any standard track lighting mounting system.

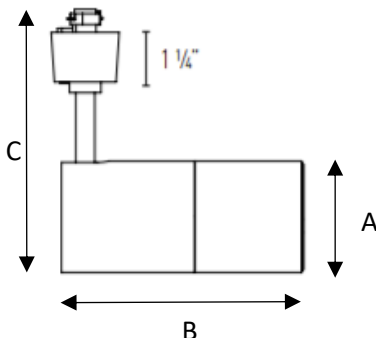
- Housing:
 - Die-casting aluminum housing for superior durability with black or white color options
- Optical Lens:
 - 12° spot, 24° narrow flood and 36° flood
- LEDs:
 - High quality LED for color consistency
- Finish:
 - Powder coat finish that provides superior resistance to static,
- Application:
 - Highlighting objects and illuminate interior areas
- Warranty:
 - 5 years warranty.

Ordering Information

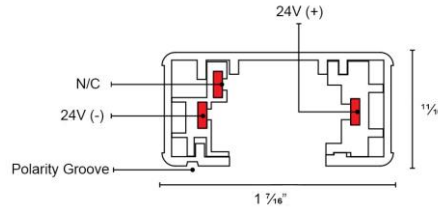
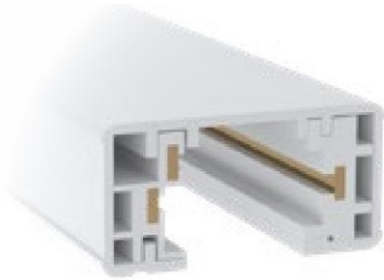
Product code	Voltage	Beam Angles	Wattage	CCT (K)	Finish	Optional
TR-24XX	24					
XX =	24 – 24Vdc	12 - 12°	115lm/watt	27 - 2700K	W - White	N: No option
01 - 1.97" dia.		24 - 24°	10W- 10W	30 - 3000K	B - Black	
02 - 2.76" dia.		36 - 36°	15W- 15W	35 - 3500K		
03 - 3.54" dia.				40 - 4000K		
04 - 4.33" dia.						

Note: Fixtures must be grounded in accordance with national, state, and/or local electrical codes. Failure to do so may result in serious personal injury

Mechanical Dimensions



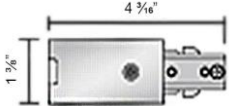
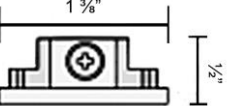
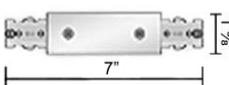

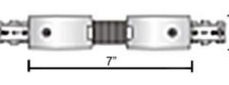
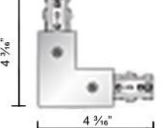
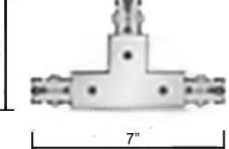
	A - Diameter	B - Length	C - Height
TR-2401	1.97"	4.33"	4.76"
TR-2402	2.76"	6.00"	6.26"
TR-2403	3.54"	7.08"	7.00"
TR-2404	4.33"	7.83"	8.46"

Related Products
One Circuit Track Power System


One circuit track is an affordable and durable solution that features easy installation. The track is available in 2 ft., 4 ft., 6 ft. and 8 ft. Track may be field cut to accommodate custom lengths

- Model: TR-TS02 (2 ft.)
- TR-TS04 (4 ft.)
- TR-TS06 (6 ft.)
- TR-TS08 (8 ft.)

One Circuit Track Feeds/ Connectors

Power Feed Connector To Start a Run Model: TR-24-PFC		End Cap To End a Run Model: TR-24-EC	
Straight Feed Connector To Connect Two Track Sections End-to-End. Can Be Used As a Power Feed Model: TR-24-SFC		Miniature Straight Connector To Connect Two Track Sections End-to-End. Model: TR-24-MSC	
Flexible Connector To Connect Two Track Sections At Any Angle Up to 90°. Model: TR-24-FC		L Connector To Connect Two Track Sections At 90° Angle. Can Be Used As a Power Feed Model: TR-24-LC	
T Connector To Connect Three Track Sections in a "T" Configuration. Can Be Used As a Power Feed Model: TR-24-TC		X Connector To Connect Four Track Sections In an "X" Configuration. Wired As Two Separate "L" Sections. Can Be Used As a Power Feed Model: TR-24-XC	